



Kia Ora
 Talofa lava
 Malo e lelei
 Bula vinaka
 Fakaalofa lahi atu
 As-salam alaykom
 Hello

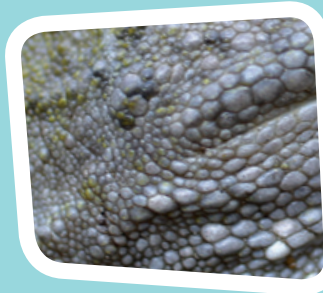
my name room



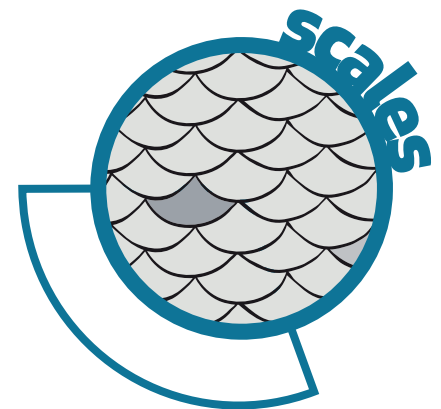
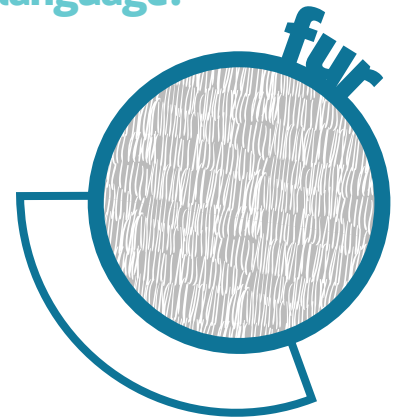
before you visit



draw a line
to match
the animal
to the fur, feathers or scales.



Can you write these
words in a different
language?



before you visit

Write, draw or take a photograph
and glue it to this page!



I wonder...



What does a zoo do?

What does the Zoo do for the animals?

What do these words mean? Draw a line to the definition

Enclosure

The place an animal
lives in the wild

Habitat

When a species is at risk
of becoming extinct

Conservation

The place we have built
for the animal to live
in the Zoo

Endangered

Saving and protecting
the environment

If you were an animal, what would you be and why? Draw it here!

**during
your visit**

**draw
some
animals
that you saw
at the Zoo**

**Make sure you
draw in some
food, shelter
and other things
the animal
might need.**

something that lives in the rainforest

something from Africa

something from Aotearoa New Zealand

during your visit

Write, draw or take a photograph
and glue it to this page!

Draw your favourite animal.

Why is it your favourite?

Use the space to write down the most interesting things
you found out today! Or answer the questions you had...

Do you know where it lives in the wild?

What special features does
it have that help it live there?

Have you seen an endangered animal today?

Draw it in this box

Why is it endangered?

I wonder...



I smelled...

ka hongī ahau...

I wish... hiahia i...

I heard... rongo ahau...

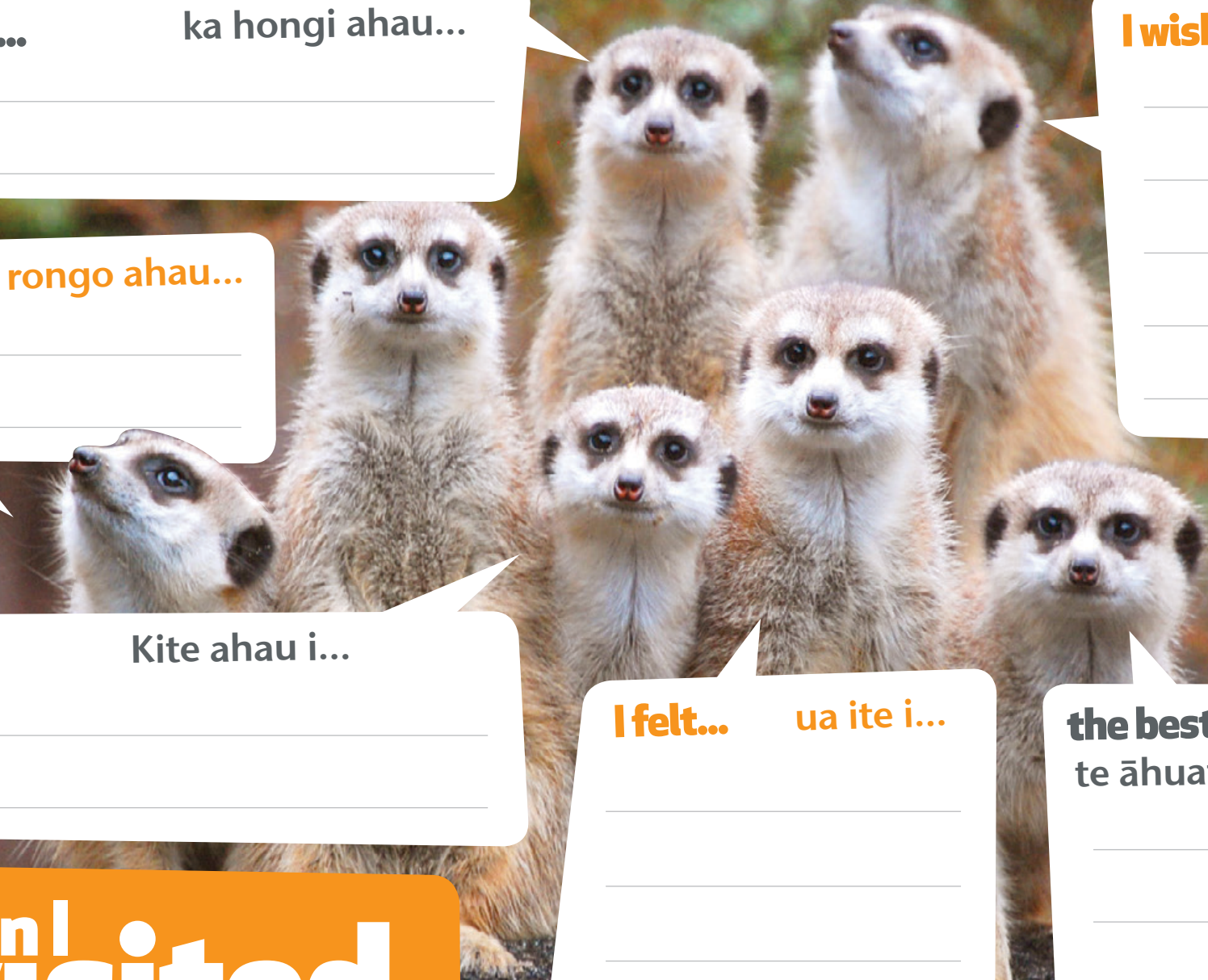
I saw...

Kite ahau i...

I felt... ua ite i...

**the best bit was...
te āhuatanga pai...**

**when I
visited
the Zoo...**



after your visit

Write, draw or take a photograph
and glue it to this page!

What does a Zoo do?

What does the Zoo do for the animals?

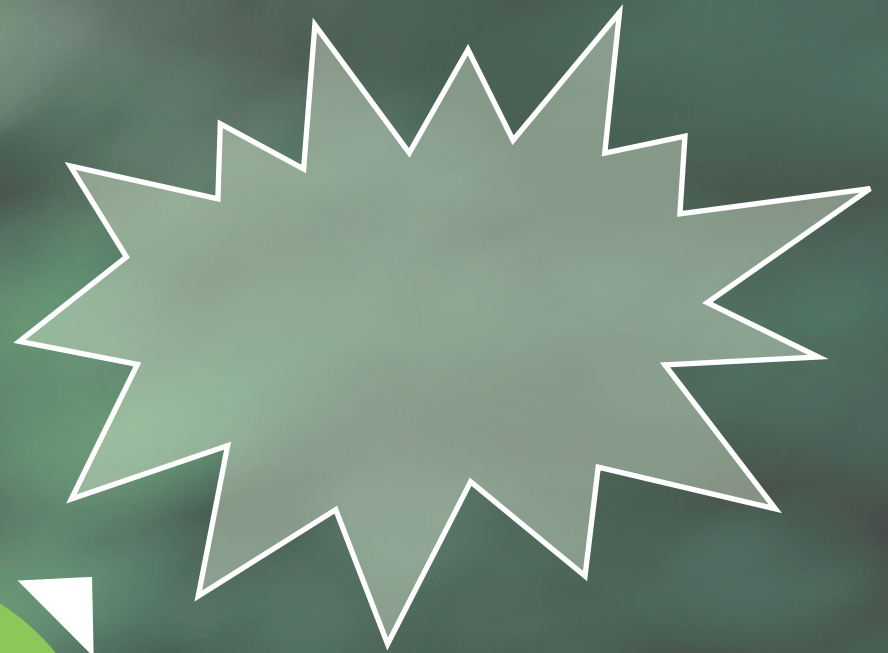
Is your answer different from before you visited? Why?

**Conservation
actions I can take
to help wildlife**

Take a photo and glue it
on this page!

**If you were an animal,
what would you be and why? Draw it here!**

Is your answer different from before you visited? Why?



wordfind

Tick the circle when you find the hidden english words in the puzzle

Can you write these words in a different language?

amphibian

bird

carnivore

environment

feathers

fish

fur

herbivore

mammal

endemic

omnivore

rainforest

reptile

savannah



U	L	T	Y	T	F	Y	X	E	H	N	F	F	M	X	F
F	W	N	F	Q	D	M	R	W	A	E	G	I	F	U	E
E	B	E	O	O	Q	O	V	I	N	N	O	S	L	B	A
E	A	M	L	S	V	Q	B	J	N	D	O	H	H	L	T
L	W	N	Q	I	O	M	D	K	A	E	O	V	Q	J	H
C	J	O	N	S	M	A	J	C	V	M	N	C	C	R	E
L	S	R	G	E	N	V	M	J	A	I	J	V	E	R	R
L	A	I	M	L	I	J	N	P	S	C	R	P	E	Y	S
C	P	V	M	A	V	D	D	S	H	T	T	Q	U	U	R
Q	D	N	A	C	O	H	K	L	X	I	Q	A	S	J	L
A	U	E	B	S	R	J	M	O	L	A	B	D	Q	Q	E
U	H	H	X	A	E	I	T	E	B	H	S	I	P	N	U
S	T	T	T	S	E	R	O	F	N	I	A	R	A	Q	R
N	J	R	U	F	H	E	R	B	I	V	O	R	E	N	G
K	X	R	N	G	H	A	B	I	T	A	T	C	V	N	I
N	M	L	M	J	M	A	M	M	A	L	H	B	I	R	D



habitat

scales

